



Panaegis Gold Mines Limited

(ABN 42 111 587 163)

OPERATIONS REVIEW

October, 2007



Important Notice

The information contained in this presentation includes forward-looking statements regarding future events and the future financial performance of Panaegis Gold Mines Limited (ACN 111 587 163) (*Panaegis or the Company*). Panaegis makes no representation or gives any assurance that these statements will prove to be accurate as future circumstances or events may differ from those which have been anticipated by Panaegis.

The information contained in this presentation is current as at 19 October 2007. All statements are based upon the Company's best information as at 19 October 2007. Any estimates or projections as to events that may occur in the future (including projections of revenue, expense, net income and share performance) are based upon the best judgement and beliefs of Panaegis management but are subject to various risks, uncertainties and assumptions.

Panaegis has not independently verified the information contained herein. Panaegis does not make any representation or warranty, express or implied as to the accuracy of the information or opinions contained in this document and no liability is accepted by Panaegis or any of its directors, members, officers, employees, agents or advisers for any such information or opinions. Accordingly, this information is being supplied to you, in whole or in part, for information purposes only and not for any other purpose.

This document does not constitute a prospectus and should not be construed as a solicitation of an offer to buy or sell any securities or related financial products in any jurisdiction. The contents of this document should not be construed as legal, tax, accounting or investment advice or a recommendation.

Potential investors should not rely solely on the information contained herein prior to making any investment decision. Investors should seek independent advice from a properly qualified advisor, giving due regard to their own personal circumstances, prior to forming any investment decision.

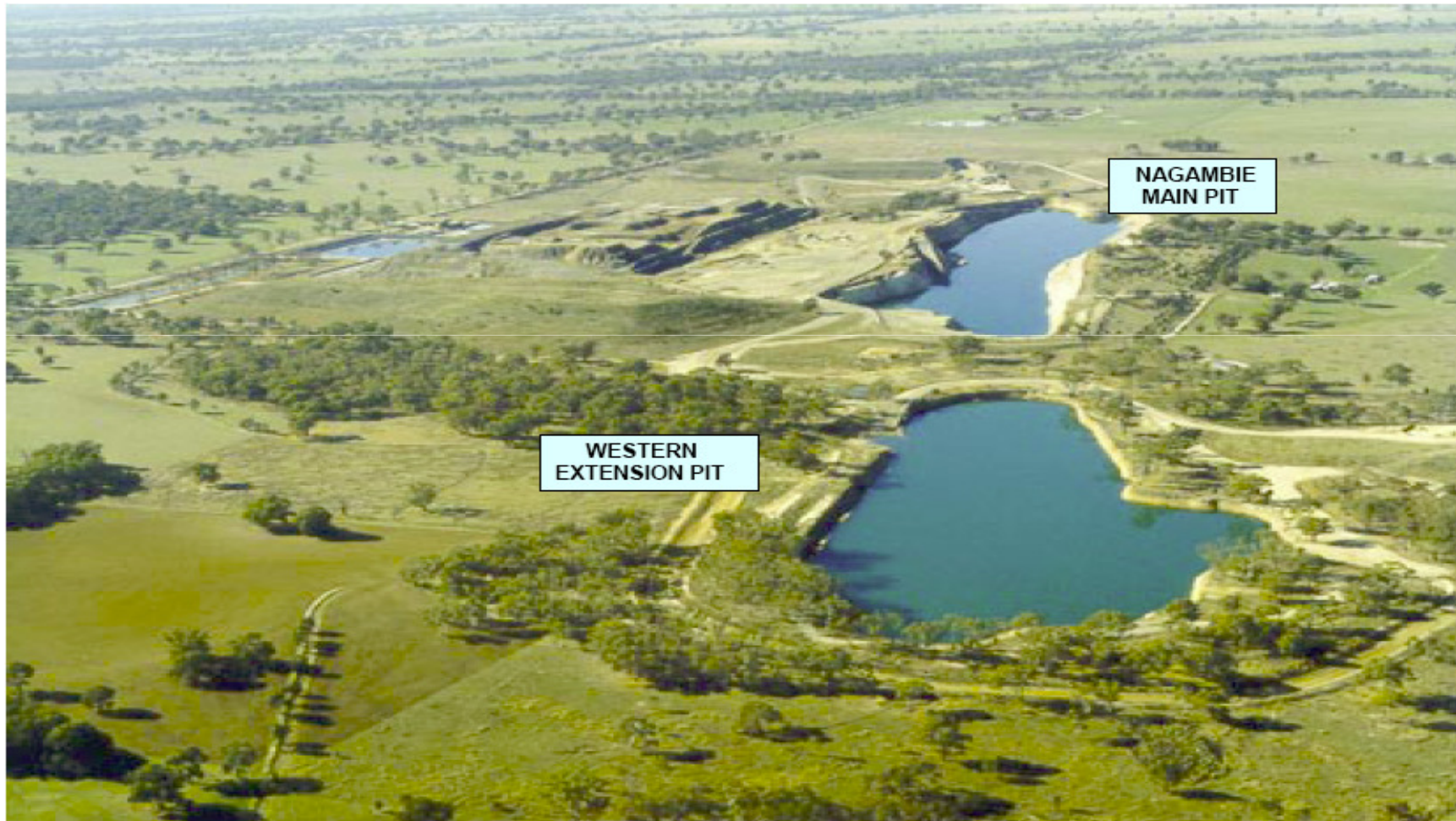
STRATEGY

- **Develop** World Class Gold and Antimony Production
- **Discover** and Develop Gold and Base Metal Projects
- **Diversify** Exploration and Development Focus

RELATIONSHIPS

- **CORPORATE PEERS** (Farm-outs, Farm-ins, JV's, NSR's)
- **CORPORATE MAJORS** (Mature Exploration, Projects, JV's)
- **CORPORATE JUNIORS** (Prospective, Diversifying Opportunities)

Aerial view Nagambie Mine





OPERATIONS

EXPLORATION: FOCUS and OBJECTIVES

- **Nagambie JV:**
 - **Oxide Resources Definition (2008)**
 - **Sulphide Resources Definition (2008)**
 - **Satellite Resources Definition (2009)**
 - **Major Project Development (2009), Production (2010)**
- **Non-JV**
 - **Gold and/or Base Metal Resource Delineation (2008)**
 - **Sterilisation and Relinquishment (2008)**
 - **Asset Diversification**

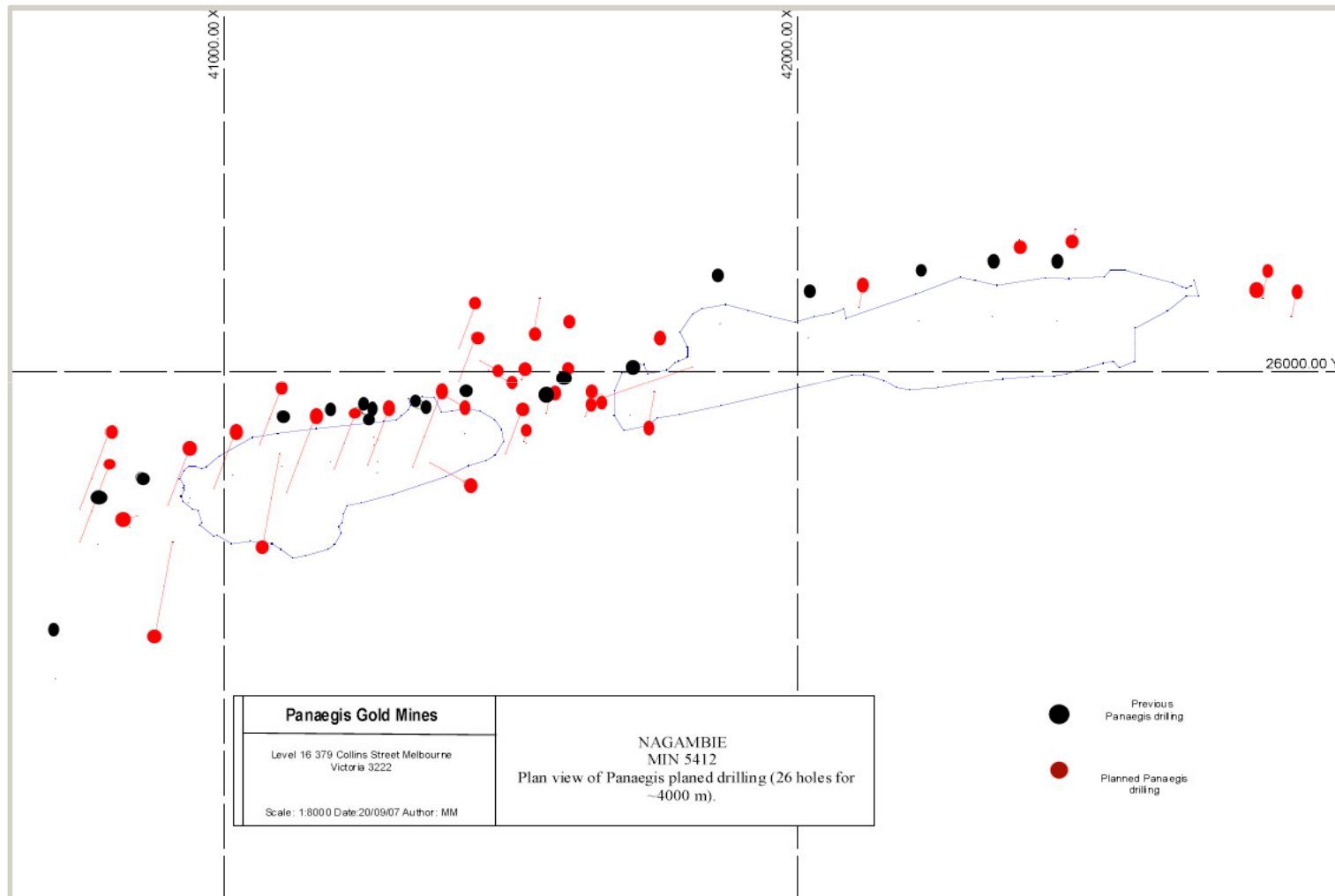
Nagambie JV review

- **JV Equity Earn-in (March 07)**
- **MIN5412 structural interpretation (May 07).**
- **Regional structural interpretation (Jul-Aug 07).**
- **Heap Leach not a ‘Stand-Alone’ Project.**

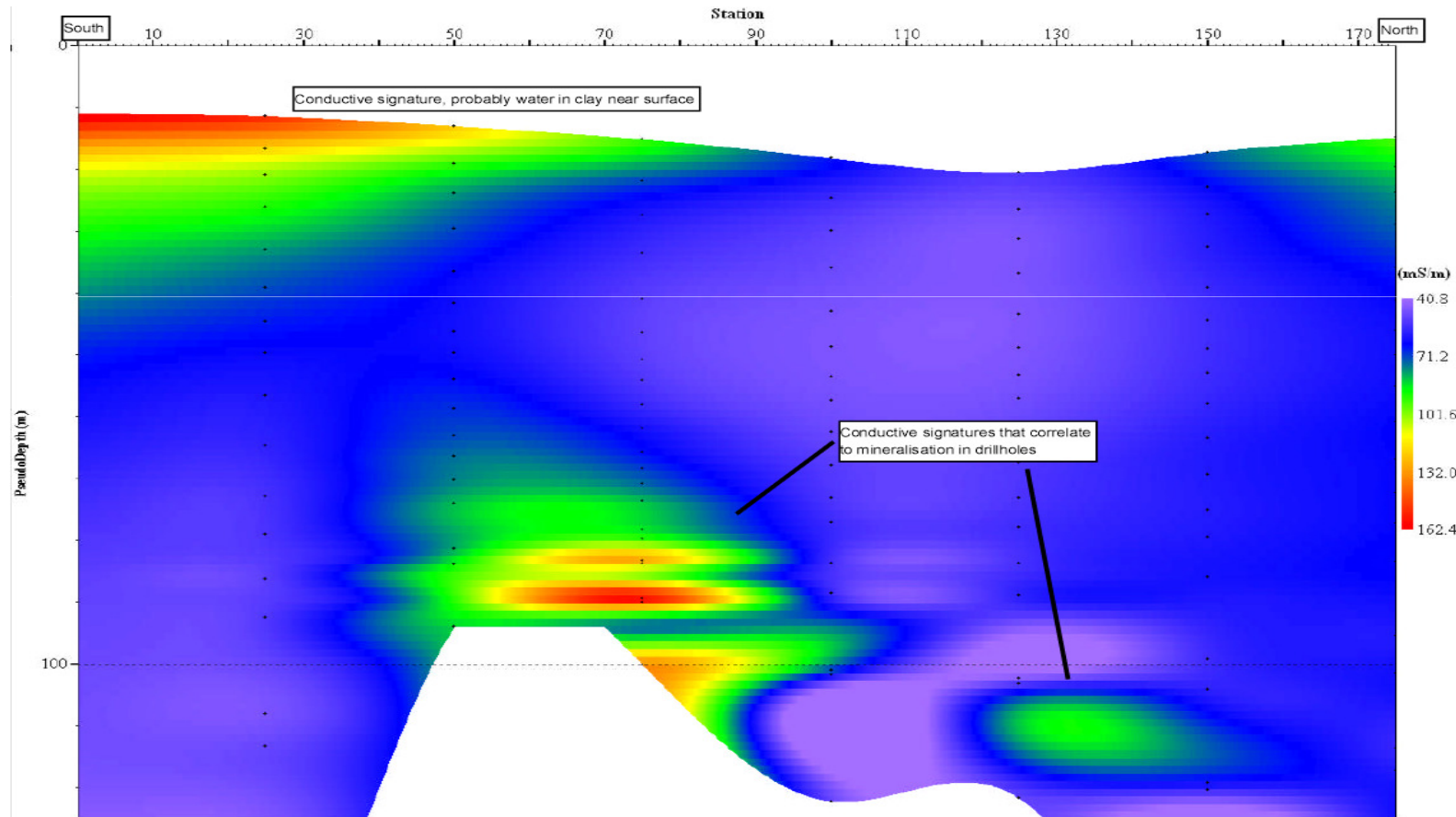
Nagambie JV Future

- **Soil sampling**, targeting identified structural intersections.
- **MIN5412 In-fill & Extension Drilling** (~ 1,200 m) targeting Oxides, Sulphides and Resources & Reserves Estimation.
- **New Structural Interpretation** mineralisation controls Focus.
- **Established EM Geophysics** for quick ground assessment of undercover Basement anomaly targets beneath soil anomalies.
- **Drilling** of geophysical anomaly targets leading to Regional Resources Delineation (1,200 m)

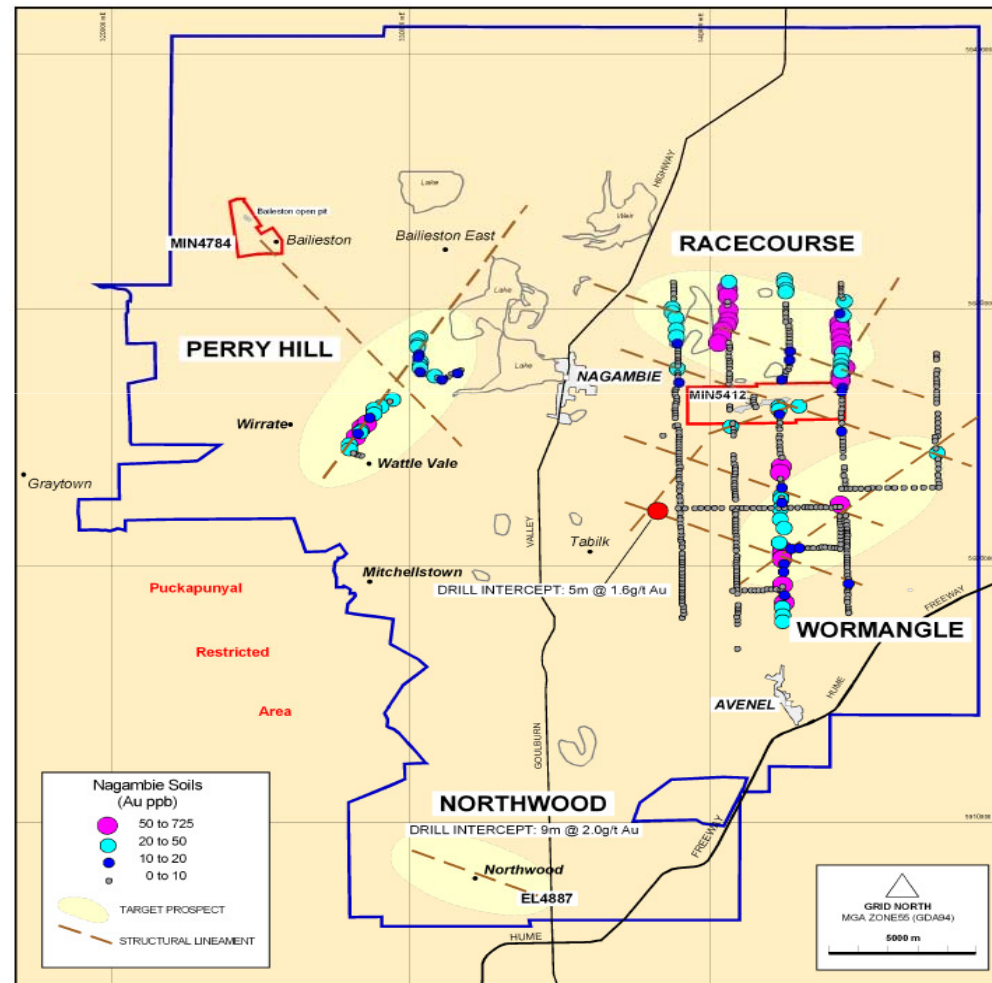
Nagambie In-Fill & Extension Drilling



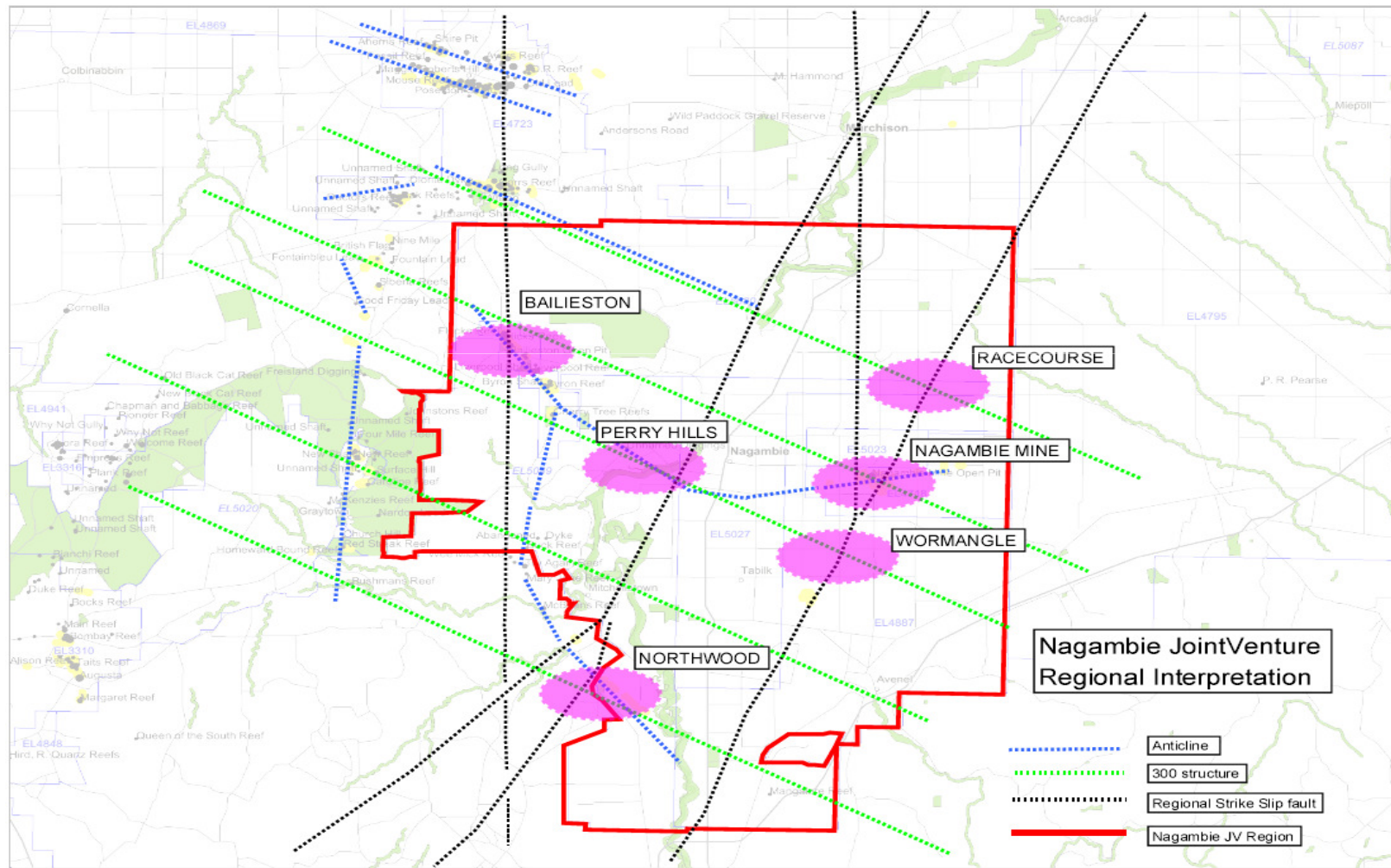
Nagambie EM Conductivity Section



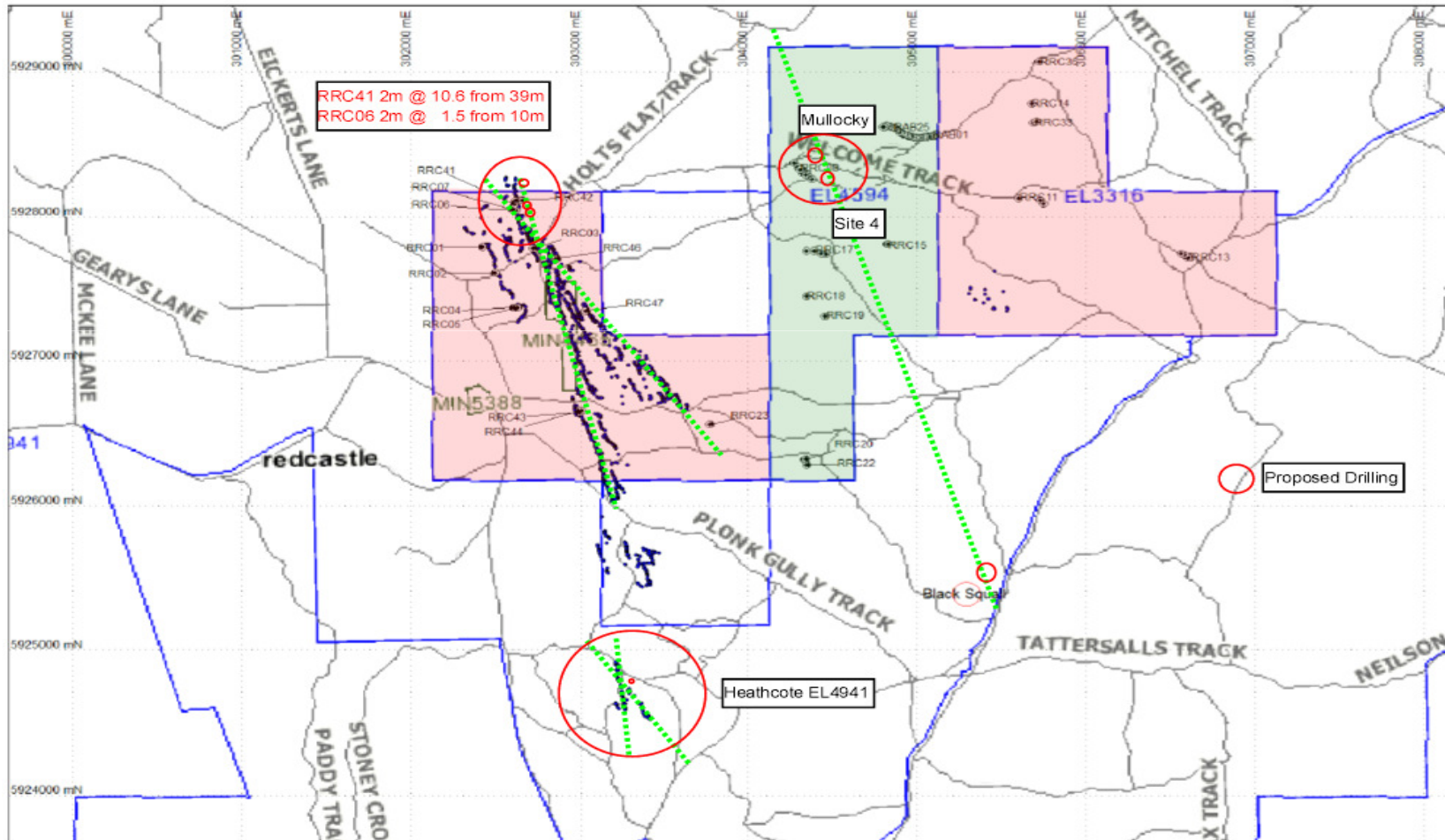
Nagambie Regional Satellites



Nagambie JV Region Interpretation



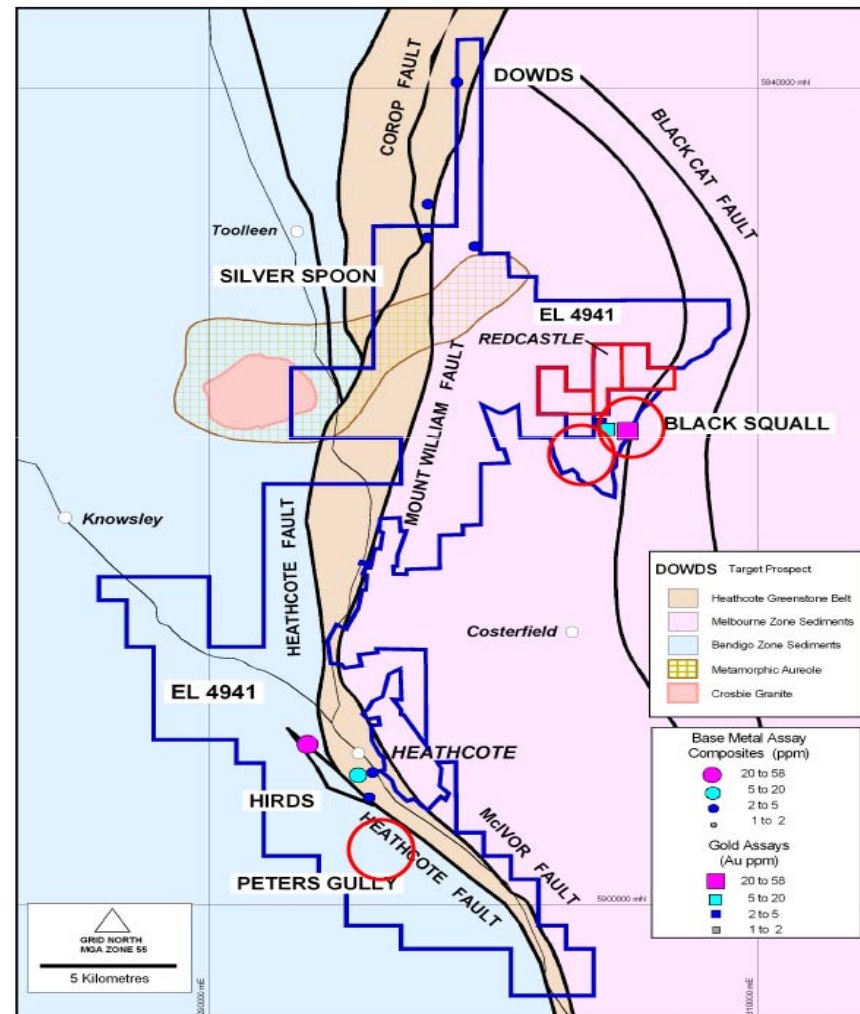
Redcastle Structure & Proposed Drilling



Taradale United Kingdom Anticline



Heathcote Proposed Drilling



SUMMATION



- **Panaegis is poised for an exciting period of Exploration**
- **Highly Prospective Nagambie JV Region primed with:**
 - Delineated sulphide mineralisation at Nagambie Mine,
 - Identified Regional Soil Anomaly Targets,
 - Mutually confirmatory regional geology and geophysical interpretations,
 - Established ground geophysics Drill Target locator.
- **Simultaneous Progression of other JV Region Targets**
- **On track to Nagambie JV resource definition and economic reserves.**
- **Progression of Non-JV Gold and Base Metal Exploration**